

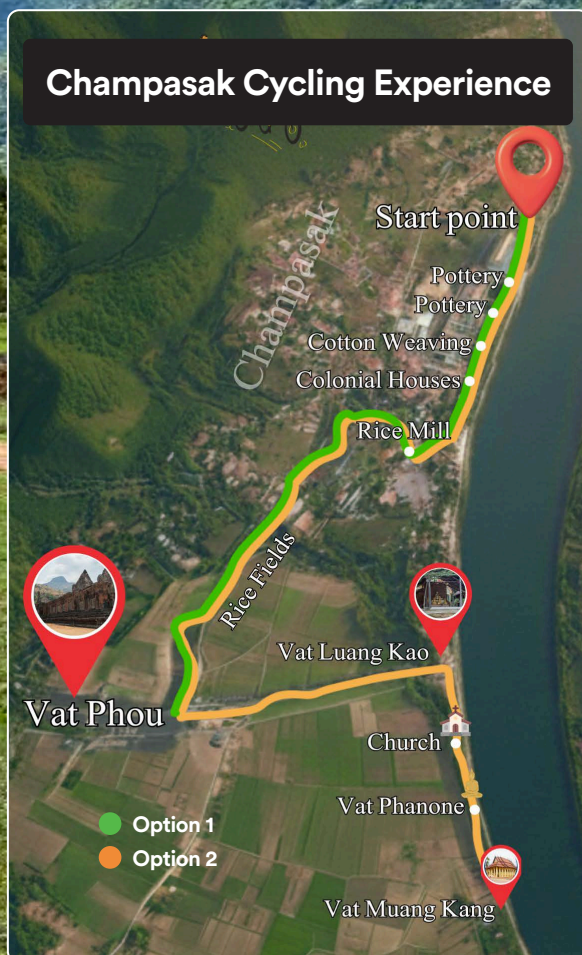
Explore Champasak, Bike Tour:

Champasak Surroundings Discovery By Mountain Bike

What better way to explore Champasak and its surroundings than by bicycle? It's a unique way to immerse yourself in rural life and admire the stunning landscapes of Southern Laos as you pass through rice fields and villages.

This easy ride lasting around 1 hour and 30 minutes, takes you from the village of Champasak to the UNESCO World Heritage site of Vat Phou. Several options are available depending on your desire for discovery.

To complete your exploration, don't miss the opportunity to stop along the way and visit the magnificent Khmer temple of Vat Phou and its museum.



Explore Champasak, Bike Tour

Tour Options

- **Option 1: Champasak-Vat Phou (100% Cycling)** - Ride from Champasak to Vat Phou through villages and rice fields, and return to Champasak via the main road.

Cycling time: approx. 2h30 - Cycling Distance: 21 km - Total duration: 3 hours

- **Option 1+: Champasak-Vat Phou (including Support Vehicle)** - Cycle from Champasak to Vat Phou through villages and rice fields, then return by road with the support vehicle.

Cycling time: approx. 1h30 - Cycling Distance: 11 km - Total duration: 2h30

- **Option 2: Champasak-Vat Phou with Extension to Vat Muang Kang (100% Cycling)** - Cycle from Champasak to Vat Phou through villages and rice fields, then continue to Vat Muang Kang and return to Champasak via the main road.

Cycling time: approx. 3h30 - Cycling Distance: 28 km - Total duration: 4 to 5 hours

- **Option 2+: Champasak-Vat Phou with Extension to Muang Kang Temple (including Support Vehicle)** - Cycle from Champasak to Vat Phou through villages and rice fields, then continue to Muang Kang Temple. Road sections are covered by the support vehicle (songtaew).

Cycling time: approx. 2h30 - Cycling Distance: 18 km - Total duration: 3h30 to 4 hours

Good to Know

- **Departure:** From the bike rental shop located in Ban Muang Saen at 9:00 AM. Return to the same location (For the option with support vehicle, departure and return from/to your accommodation is possible.)
- **Guided Tour:** The ride is accompanied by a local guide (not English speaking).
- **Maximum number of participants:** 8
- **Minimum age:** 12 years old
- **Availability:** Daily, with reservation required at least 2 days in advance (final booking subject to confirmation)
- **What to bring:** Water, comfortable clothing, hat or cap, sunscreen

Price per person:

Champasak and surroundings discovery tour by bike				
Number of participants	1	2	3-5	6-8
Option 1 (Price per person)	538,000 LAK	346,000 LAK	294,000 LAK	235,000 LAK
Option 1+ (Price per person)	970,000 LAK	568,000 LAK	437,000 LAK	377,000 LAK
Option 2 (Price per person)	610,000 LAK	388,000 LAK	317,000 LAK	247,000 LAK
Option 2+ (Price per person)	1,020,000 LAK	594,000 LAK	449,000 LAK	378,000 LAK
Optional Lunch in local restaurant	1 to 4 pers: 240,000k/pers. 5 to 8 pax: 200,000k/pers.			

The price includes:

- Mountain bike
- Local guide (not English speaking)
- Transport from participant's accommodation to the bike shop and vice versa
- Support vehicle (options 2 and 4)
- Water

The price does not include:

- Entrance fee to Vat Phou
- Optional lunch (see price above)



For booking and information:

Wat Phou Travel: 020 99 495 858 • Mr Khemphet: 020 98 001 349
Tourism Information Center: 020 94 290 549

